

## Order form

---

Your country contact

### Hereby, I order:

Ref.no.: \_\_\_\_\_ Qty: \_\_\_\_\_

\_\_\_\_\_

\_\_\_\_\_

\_\_\_\_\_

\_\_\_\_\_

\_\_\_\_\_

Title, name: \_\_\_\_\_

first name: \_\_\_\_\_

address: \_\_\_\_\_

\_\_\_\_\_

Phone: \_\_\_\_\_ Fax: \_\_\_\_\_

E-Mail: \_\_\_\_\_

Please send me your updated catalogue

Visit requested.

Date/Signature: \_\_\_\_\_

## Good reasons for stoma®

---

### stoma® hands-on-workshops

You may test with your stoma contact person solutions for the specific indication and corresponding application techniques.

### stoma® professional consulting

Our medical device consultants are eager to inform you and present to you about our products.

### stoma® made in Germany

Our headquarter in southern Germany stands for swabian innovative spirit, high class workmanship and precision.

### stoma® competent support

Be it new installations of physician's practice, enlargements or instrument organization, we are your competent partner.

### stoma® after sales service

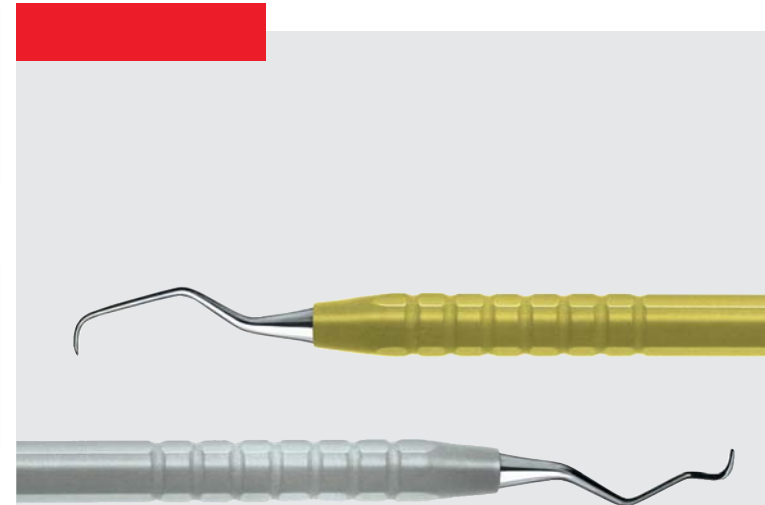
Your defect and edgeless instruments may be repaired by our competent service team.

**stoma®**  
innovation

---

## Titanium Mini-Curettes Set

**NEW**

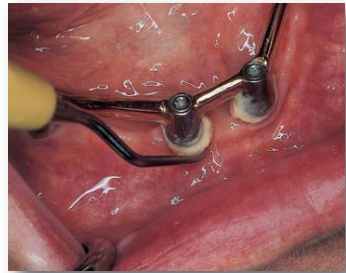


## Product-Application

The new titan-mini-curettes are intended to be used for the removal of concretions in case of peri-implant disease. Compared to teflon- and carbon curettes, the following new titan-mini-curettes instruments are capable of hauling out more concretions out of the concrement bag.

Due to the special material specification of the titan-mini-curettes, these can be applied in most implants, without the risk of scratching the oftentimes rough implant surface.

Titan-mini-curettes are characterized by its shorter working part compared to standard curettes. Thus, the access to the narrow root surface is being facilitated. In combination with the working part which is cutting only on one side, the trauma of the tissue is reduced considerably.



Thanks to the mini design of the operating surface, these mini curettes can ideally be used for the narrow peri-implant sulcus.

As a result they are suitable especially in cases of a manifest peri-implant disease, where there is no risk to damage the implant due to the already existing rough surface.

**stoma**<sup>®</sup>

Emminger Straße 39  
78576 Emmingen-Liptingen  
www.stoma.de

## Product Details



**Art.Nr. 19905.01**  
Titanium Mini-Curettes Set

Ref.No.	Description
<b>5110.10</b>	Mirror handle, blue
<b>34964.00</b>	Megaduo-mirror, plain, size 4, Rhodium
<b>5110.10</b>	Mirror handle, blue
<b>2922.20</b>	Perio probe-inset, PCPNGT22, titanium
<b>7755.22</b>	color-stick <sup>®</sup> titanium mini-curette 5-6 Ø 8 mm
<b>7761.22</b>	color-stick <sup>®</sup> titanium mini-curette 11-12 Ø 8 mm
<b>7763.22</b>	color-stick <sup>®</sup> titanium mini-curette 13-14 Ø 8 mm
<b>2991.07</b>	p.i.c. <sup>®</sup> -wash-tray for 7 instruments with teflon bridge

## Accessory

Benefit from different ways of preparation of your instruments.

### Clearsighted Sterile Packaging

On the roll, flat, with indicating device for sterilization

Weld in your specific instrument or even completely equipped trays.



Ref.No.	Size
<b>6453.05</b>	50 mm x 200 m
<b>6453.07</b>	75 mm x 200 m
<b>6454.10</b>	100 mm x 200 m
<b>6453.15</b>	150 mm x 200 m
<b>6454.20</b>	200 mm x 50 mm x 200 m*
<b>6454.25</b>	250 mm x 65 mm x 200 m*

\* with fold

Our high-end **p.i.c.<sup>®</sup>-containers** with a long life-cycle provide the conservation of the once attained sterilization up to the opening due to the silicone gasket. They offer a safe and eco-friendly alternative to the non-reusable packaging thanks to their filter system. The containers can be described unequivocally by colored markers with individual marking possibilities. In connection with stackability of the containers, this system offers an easy handling and a space-saving and organized storage.

